

COMPANY PROFILE

CV. KARYA PENTA

Complete Range of Tanks & Vessels



Giant Pondok Gede
Blok E/5, Jatiwaringin
Kota Bekasi 17411



6221-8485657
6221-8483763
6221-8460417



6221-8460417



pentatank@gmail.com
info@tangkisolar.com
info@pressuretank.co.id

INTRODUCTION

CV. Karya Penta was established in 1996. Since the first year of our business, we are specializing in manufacturing Tanks and Vessels. In order to fulfill our customer requirements, we are now producing tanks and vessels' derivatives such as heat exchangers, pig launchers, sand filters, mixed bed filters, calorifiers, etc.

▶▶ Our main business mission is to be a reliable and standardized manufacturer with local people and material achieving global qualities and competitive prices.

Karya Penta's market segments are air compressor dealers and users, pump manufacturers, mechanical contractors, diesel engine generator's suppliers, general industry, chemical industry pharmaceuticals, hospitals, food industry, water treatment and water companies, automotive manufacturers, can making industry, etc.

Standards of manufacturing and fabricating we are applying are JIS, ANSI, DIN, ASTM, ASME Sect.VIII, API 620,650, SNI-05-3563. Each product is certified by DEPNAKER or MIGAS, or BKI in accordance with our valued clients' requirements.

Yours Faithfully,

Judith T. (Ms.)
Sales Manager

TABLE OF CONTENT

INTRODUCTION	1
TABLE OF CONTENT	2
PROFILE	3
ORGANISATION CHART	4
PRODUCT RANGES	5
LIST OF EQUIPMENT & TOOLS	6
OUTSTANDING CUSTOMERS	7-8
CERTIFICATES	9
MANAGEMENT TEAM	10
PRODUCT GALLERY	11-12
TECHNICAL DATA SHEET	13
DIMENSION AND SPECIFICATION	14
LEAFLETS	15



PROFILE

Company Name : CV. Karya Penta
Year of Establishment : 1996
Brand Names :



Addresses : **Head Office**

Jln. Raya Jatiwaringin, Ruko Graha
Indah (Giant Pondok Gede) Blok E no. 5,
Bekasi 17411
Tel. 6221-8485657, 8483763, 8460417
Facs. 6221-8488267, 8485663
E-mail. pentatank@yahoo.co.id,
herindo@yahoo.com
Website. www.tangkisolar.com
www.pressuretank.co.id

Workshop

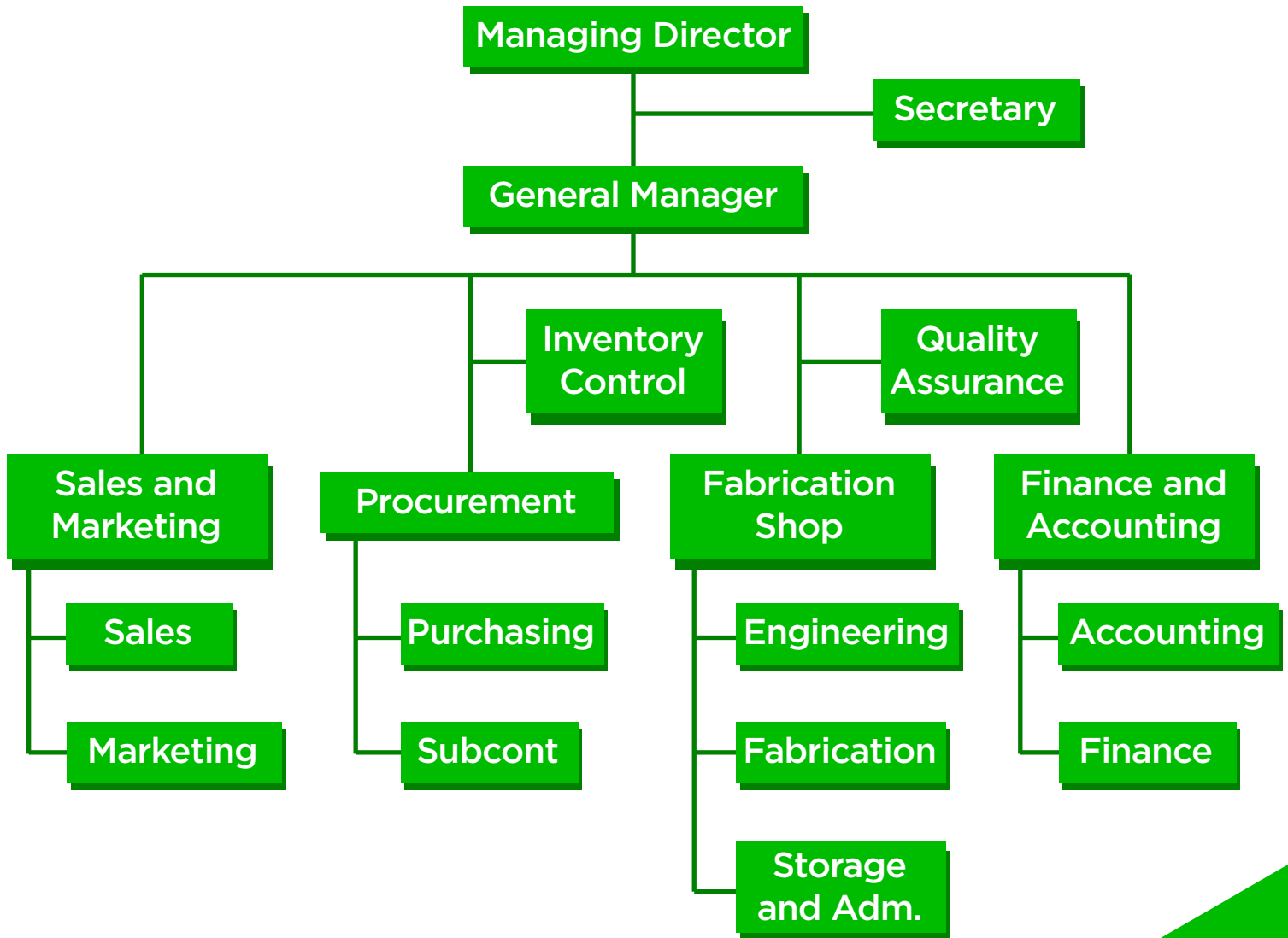
Jln. Raya Perjuangan km 12 Babelan,
Bekasi Utara
Tel. 6221-26268008, 26268090
Facs. 6221-292925813

Company Registration No. : 510/2221-BPPT/PM/XII
Pressure Vessel Manuf. No. : 219/PPK-PNK3/VIII

Main Bank : PT. Bank Mandiri Tbk.
PT. Bank Central Asia
Stock Value : IDR.5,000,000,000,-
Workshop Area : 4000 sqm

ORGANISATION CHART

Penta-tank™



OUR PRODUCT RANGES

1. Air Receiver Tank • Air tank • Compressor Tank 100L - 100000L, 1 Bar - 100 Bar
2. Water Pressure Tank • Booster Tank • Water Hammer Tank, 100L - 100000L
3. Membrane Tank • Suspension Tank • Bladder Tank 100L-100000L, 1 - 100 Bar
4. Hydrophore Tank • Hydrant Tank • Fire Pressure Tank 100L - 100000L, 50 Bar
5. Pressure Vessels • Vacuum Vessels • Test Separator Tank • 100L - 100000L, 50 Bar
6. Air Accumulator • Air Vessels • Compressed Air Tank • Nitrogen Tank 50 Bar
7. Heat Exchanger • Steam Calorifier • Water Heater • Hot Water Tank 100000LPH
8. Pig Launcher • Pig head Receiver • High Pressure Air Tank 10 Bar - 100 Bar
9. Air Storage Tank • Steam Storage Tank • Condensate Storage Tank 5-10 Bar
10. Steam Coil • Heating Coil • Heating Element • Immersion Heater up to 10 Mcal
11. Mixer Tank • Mixing Vessel • Agitator • Reactor Tank • 100L - 100000L, 5-50 Bar
12. Water Storage Tank • Fuel Storage Tank • Oil Storage Tank 100L - 10000KL
13. CPO Storage • Crude Oil Tank • Mud Tank • Sludge Tank 100L - 5000KL
14. LPG Buffer Tank • LPG Surge Tank, LPG • LNG Storage Tank 1000L - 1000KL
15. Water Filter • Sand Filter • Carbon Filter • Manganese Filter 5000 - 500000LPH
16. Water Softener • Mixed Bed Filter • Bag Filter • Cartridge Filter 5000 - 500000LPH
17. Water Demineralizer • Water Deionizer • Anion Tank • Cation Tank 500000LPH
18. Fiberglass Cylindrical Tank • Fiberglass Panel Tank • FRP Chemical Tank 5-200KL
19. Mobile Water Tank • Mobile Milk Tank • Mobile Gas Tank, Mobile Mixer 5-50KL
20. Oil Tank Truck • Fuel Tank Truck • Asphalt Tank Truck • Vacuum Tank Truck 5-50KL
21. Water Treatment Plant • Waster Water Treatment Plant • Sewage Treatment 100klph
22. Modular Steel Tank • Modular FRP Tank • Poly Ethylene Tank • PP Tank 2-200KL
23. Under Ground Fuel Tank • Above Ground Tank • Towerized Tank up to 200KL
24. Stainless Steel Pressure Tank • Stainless 316 Mixer Tank • Stainless Storage 5-5000KL
25. Hydrogen Tank • Oxygen Tank • Nitrogen Generator • Ozon Generator 5000klpd
26. Sand Trap Tank • Silo Tank • Destilation Tank • Desstilation Tank up to 500KL
27. Liquid Amonia Tank • Chilled Water Tank • RO Membrane Filter Housing 5-500KL
28. Roll Press Machine • Dish End Press Machine • Flanging Machine 3-25mm • 500ton
29. Fuel Supply System • Water Supply System • Gas Supply System • Fire Fighting
30. Foam Bladder Tank • Membrane Tank • Diaphragm Tank • Panel Tank, Rubber Bladder

List Of Equipment And Tools

1. Roll Press Machine (Hydraulic) 25mm	1 Unit
2. Roll Press Machine (Hydraulic) 12mm	1 Unit
3. Roll Press Machine (Manual-Electric) 12mm	4 Unit
4. End (Ball Front) Torispherical Press Mch.25mm	1 Unit
5. Dish End Pres Machine 12mm	2 Unit
6. Dish End Flanging Machine 12mm	1 Unit
7. Diesel Engine Generator 175 KVA CAT.	1 Unit
8. Diesel Generator isuzu 60 KVA	1 Unit
9. Overhead Crane 7.5 To Samsung	1 Unit
10. Electric Winch 3 Ton Samsung	1 Unit
11. Manual Chain Hoist Elephant 5 Ton	6 Unit
12. Toyota Forklift 6 Ton	1 Unit
13. Plate Bending Machine EX Japan 8mm	2 Unit
14. Plate Shearing Machine 8mm EX Japan	1 Unit
15. TIG Welding Machine 400A EX France	3 Unit
16. TIG Welding Machine 300A EX China	4Unit
17. MIG Welding Machine 400A EX Italy	2 Unit
18. SAW Automatic Welding Machine 300A	2 Unit
19. SMAW Welding Machine 300A EX Swedia	5 Unit
20. SMAW Welding Transformer EX China	16 Unit
21. Engine Driven Welding Machine Yanmar 18HP	3 Unit
22. DC Gouging / Welding Machine Kobelco 400A	1 Unit
23. Air Compressor 20HP Bebicon Hitachi	2 Unit
24. Air Compressor 20HP Panther Taiwan	2 Unit
25. Air Compressor 15HP Meiji Japan	1 Unit
26. Plasma Cutting Machine 25mm Saff France	2 Unit
27. Gas Cutting Machine Koike Sancho Japan	1 Unit
28. Gas Cutting Machine EX China, Circum + Long	2 Unit
29. Drilling Machine Toshiba 16-25mm	4 Unit
30. Dish Grinder Makita, Toshiba, Bosch 4", 6", 7"	24 Unit
31. Magnetic Drill 18mm Toshiba Atoli	2 Unit
32. Cut Off Machine 18 In Makita	3 Unit
33. Flat Bed Truck 2 AXLE	2 Unit
34. Pick Up Truck Isuzu, Suzuki 4 Wheels	3 Unit
35. Light Truck Isuzu	1 Unit
36. Operational Car Mitsubishi Pajero, Outlander	4 Unit

OUTSTANDING CUSTOMERS

• Compressor



• Oil & Gas Industry



• Mining Industry



• Health Care



• Automotive Industry



• Manufacturing industry



• Government Institution



• Transportation



• Embassy



- Food n Beverage Industry



- Constructions



- Retail Industry



- Electronics industry



- Media & Communication



- Pharmaceutical Industry



- Heavy Equipment / Industry



- Hospitality Industry





Management Team

1. SRI WAHYUNI SERAN, SE
2. PIERRE J, ST.
3. IR. LULUS DASAAN
4. IR. M. RIDWAN
5. IR. JOHARI JAYADI
6. IR. M TAHIR M.SC.
7. IR. BAMBANG S.
8. JUDITH T.,MM.
9. MURSAL HASIBUAN
10. RUDY SINAGA
11. YULES SEKEON
12. EKA DHANI ST.
13. DIANA MAHARANI
14. IR. DHARMA NANDA
15. P. NAINGGOLAN
16. RUDY TANAGAN, MM.
17. BENNY P. ST.
18. DANIELA TAN, MM.

DIRECTOR
GENERAL MANAGER
PROJECT COORDINATOR
DESIGN ENGINEER
MACHINING DEPT.HEAD
VESSELS ENGINEER
TANK ENGINEER
SALES MANAGER
SHOP DEPT.HEAD
FILTER ENGINEER
FABRICATION ENGINEER
K3 SUPERVISOR
FINANCE & ACDCOUNTING
PRODUCT DEVELOPMENT
QA-QC SUPERVISOR
HUMAN CAPITAL MGR
WATER TREATMENT ENGINEER
E- MARKETING MANAGER

PRODUCT



PROJECT



PROJECT





CV. KARYA PENTA

AIR RECEIVER TANK TECHNICAL DATA SHEET

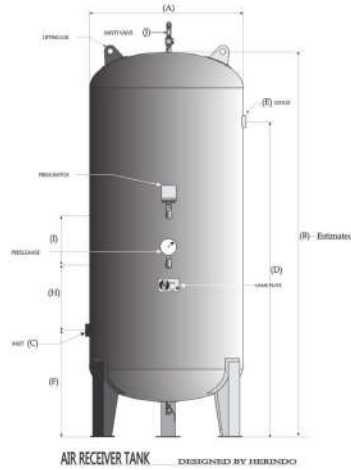
Client		Prepd	
Project		Date	
Service		Revision	-
Location	JAKARTA	Page	1 of 1

<p>PRESSURE TANK DESIGNED BY BERENDO CAR. 1000 LITER</p>		Code / Standard		Manufacture	
		Name of Equipment		Receiver Tank	
Tag Number of Equipment					
Number of Required		1			
Orientation		Vertical			
Head Type / Konstanta of shape (K)		Torishperical			
Support Type		Lifting Lugs&Supporting Legs (3 eas)			
Content		Compressed Gas			
Fluid Specific Gravity				Kg/m3	
Volume		10000		Litre	
Dimension Of Body	Outside Diameter (Di)	1825		mm	
	TL - TL (L)	3750		mm	
	Shell Thickness	12		mm	
	Head Thickness	16		mm	
	Support Legs	C S- A36 Plate 8		mm	
	Height of Support(wl-wl)	700		mm	
Pressure	Length of Skid	-		inch	
	Width of Skid	-		inch	
	Design Internal (Pi)	10		Kg/m2	
	Test Pressure (Pt)	15		Kg/cm2	
	External (Pe)	-		Psi G	
	Static Head (Ps)	-		Psi G	
Temperature	Vacum (Full, Half, No)	No		Psi G	
	Hidrostatic Test (Ph)	200		Psi G	
	Design (Ti)	120.00		deg F	
	Operating (To)	120.00		deg F	
Ladder		NO			
Clips		-			
Vortex Breaker		-			
Lifting Lugs		JIS 3101-SS400			
Empty Weight (We)		6000		Kg	
Full Weight (Wf)		6750		Kg	
Operation Weight (Wop)		6900		Kg	
Test Weight		14000		Kg	
Wind Force (Fw)				Kg	
Wind Moment (Mw)				Kg.m	

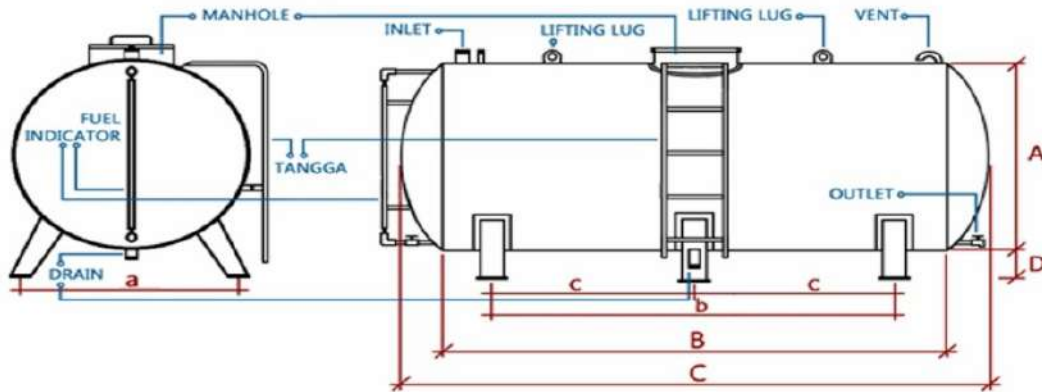
Nozzle Number	Location	Service	NPS (in)	Rating (#)	Facing	Qty (each)	Orientation (Deg)	Elevation (mm)
1		Inlet	4	10K	SOFF	1	180	
2		Outlet	4	10K	SOFF	1	180	
3		Drain	1	1000#	FC	1	0	
4		Switch	0.5	1000#	FC	1	90	
5		Safety Valve	0.5	1000#	FC	1	0	
IH		Manhole	16	10K	SOFF	1	90	

TECHNICAL DATA SHEET

Dimension and Specification



NO	CAPACITY(LTR)	WP.(KwCm)	WP.(Kg/Cm)	A(mm)	B(mm)	C(Inch)	D(mm)	E(mm)	F(mm)	G(Inch)	H(Inch)	I(mm)	J(Inch)
1	250	10	15	500	2000	15	1500	15	600	80	500	250	05
2	300	10	15	550	2000	15	1500	15	600	80	500	250	05
3	500	10	15	600	2450	15	1900	15	600	80	500	300	05
4	800	10	15	700	2700	20	2000	20	600	10	500	300	05
5	1000	10	15	790	2750	20	2000	20	600	10	500	300	05
5	1500	10	15	1000	2800	25	2000	25	800	12	700	300	075
6	2000	10	15	1120	2800	25	2100	25	800	16	700	300	075
7	2500	10	15	1120	3350	30	2650	30	800	16	700	300	075
8	3000	10	15	1120	3850	30	3000	30	900	16	600	400	075
9	4000	10	15	1120	4200	30	3000	30	900	16	600	400	075
10	5000	10	15	1400	4200	40	3800	40	900	16	600	400	10
11	8000	10	15	1450	5500	40	4500	40	900	16	700	400	10
12	10000	10	15	1600	5500	40	4500	40	900	16	700	400	10



No.	VOLUME	Tbl badan	A	B	C	D	Inlet	Outlet	Drain	a	b	c
1	1000 ltr	3 mm	1000	1200	1500	200	2"	3/4"	1"	800	800	
2	2000 ltr	4 mm	1200	1520	1900	200	3"	3/4"	1"	1000	1200	
3	3000 ltr	4 mm	1400	1830	2200	250	3"	1"	1 1/2"	1250	1500	
4	5000 ltr	4.5 mm	1400	3050	3450	250	3"	1"	1 1/2"	1250	2000	
5	6000 ltr	4.5 mm	1550	3050	3450	250	3"	1"	1 1/2"	1400	2000	
6	8000 ltr	5 mm	1800	3050	3450	300	4"	1 1/4"	1 1/2"	1500	2350	
7	10000 ltr	6 mm	1850	3660	4100	300	4"	1 1/4"	1 1/2"	1650	2500	
8	12000 ltr	6 mm	1850	4560	5000	300	4"	1 1/4"	2"	1650		1500
9	15000 ltr	6 mm	2000	4560	5000	300	4"	1 1/2"	2"	1800		1500
10	16000 ltr	6 mm	2000	4870	5350	300	4"	1 1/2"	2"	1800		1650
11	20000 ltr	6 mm	2100	5500	6100	300	4"	1 1/2"	2"	1900		2000
12	25000 ltr	6 mm	2350	5500	6100	300	4"	1 1/2"	2"	2150		2000



Pressure Vessels & Tank Builder

Mfg Code : ASME SECT VIII div 1, API 650, API 620, **SNi** 05-3563-1994

PATENT NOS - 003421
- 019639
- 019640



Calorifier/Hot Water Tank

Air/Gas Receiver Tank

Pressure Tank

Water Filter Tank

Mixing Tank

Fuel/Oil/Water Storage Tank



Bulk Storage



Metanol Tank



Bladder Tank



Monthly Vertical



Immersion Heater



Heat Exchanger



Reactor Tank



Air Receiver Tank



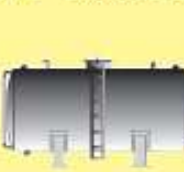
Water Filter



Water Pressure Tank



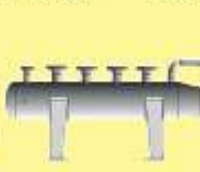
Vertical Cone



Horizontal Fuel /
Water Tank



Underground fuel tank



Steam Header



Coned Roof Tank

Product Range :

Pressure Tank (water) ; Air Pressure Tank/Air Receiver Tank
Membrane Pressure Tank/Diaphragm Tank ; Fire Tank / Hydrant Tank
Hydrophore tank ; Sand Filter/Carbon Filter tank ; Softener Tank
Demin Tank/Mixed Bed Tank ; Deaerator Tank ; Pig Launcher/
Receiver Trap Water Storage Tank/Hot Water Tank ; Fuel Storage
Tank/Under Ground Tank Vacuum Tank/Cyclone Tank ; Mixer Tank /
Reactor Tank ; LPG Surgical Tank

Application in Industry :

Mining Industry, Food Industry, Refrigerating/Cooling/Chilling
System Water Treatment Beverages Industry Chemical Industry,
Petrochemical industry, Packaging Industry, Pulp & Paper Industry,
High Rise Bldg., Apartment & Hotely Industry, Ceramic & Glass
Industry, Farming, Breeding & Plantation, Plastic Mould & Injection
Ind., Petrochemical Industry, Steel Foundry & Metal Industry

Head Office :

Graha Indah (Giant Pondok Gede)
Ruko Blok E No. 5 Jatiwaringin, Jakarta 17411

Workshop :

Jl. Raya Pabuaran No. 30 - Pondok Gede - Bekasi
E-mail : pentatank@yahoo.co.id, herindo@yahoo.com



@tangkisolar



tangkisolar.com



(d/h **HERINDO**)

Penta-tank™

Karya Penta cv

www.tangkisolar.com

Telp. : (021) 848-3763 ; 846-0417 ; 848-5657 Fax. : (021) 846-0417

<http://www.pressuretank.co.id/>

Penta-tank™



PHONE

6221-8485657

6221-8483763

6221-8460417



OFFICE

Giant Pondok Gede
Blok E/5, Jatiwaringin
Kota Bekasi 17411



Scan to access
CV. Karya Penta Location



Scan to access
www.tangkisolar.com



Scan to access
www.pressuretank.co.id